



# GAT MONTHLY MEMBERSHIP PROGRESS REPORT

Results as of: 12/31/2022

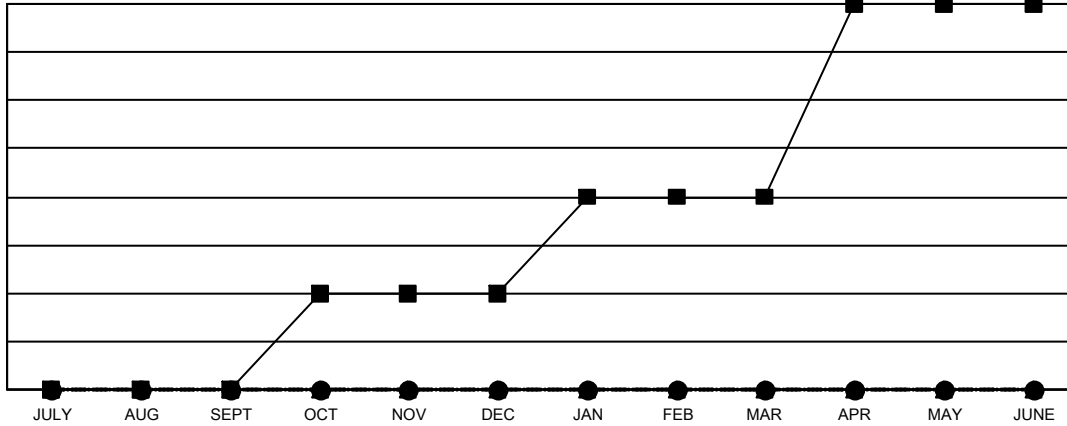
Multiple District 43

LOCATION: KENTUCKY

Clubs			
RESULTS FOR 2022-2023			
QUARTER	NEW CLUB GOAL	NEW CLUBS	DROPPED CLUBS
JULY/AUG/SEPT	0	0	3
OCT/NOV/DEC	1	0	1
JAN/FEB/MAR	1	0	0
APR/MAY/JUNE	2	0	0

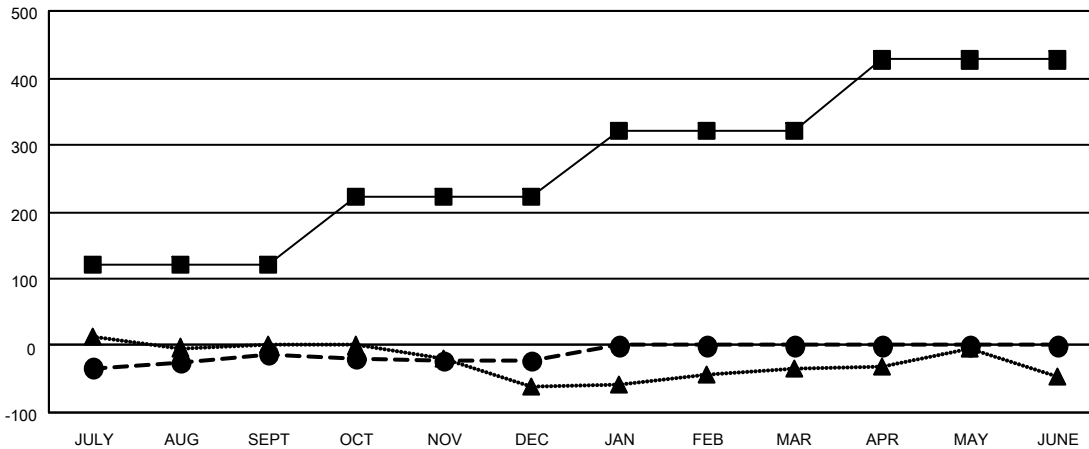
Members			
RESULTS FOR 2022-2023			
QUARTER	MEMBER GROWTH NET GOAL	MEMBER GROWTH ACTUAL	DROPPED MEMBERS ACTUAL (including transfers)
JULY/AUG/SEPT	122	116	109
OCT/NOV/DEC	100	73	74
JAN/FEB/MAR	100	0	0
APR/MAY/JUNE	105	0	0

GOALS AND ACTUAL NEW CLUBS CUMULATIVE



- CURRENT YEAR GOALS FOR NEW CLUBS
- CURRENT YEAR ACTUAL NEW CLUBS
- ▲- LAST YEAR ACTUAL NEW CLUBS

GOALS AND ACTUAL MEMBERS CUMULATIVE



- MEMBER GROWTH NET GOAL
- MEMBER GROWTH ACTUAL
- ▲- LAST YEAR MEMBERSHIP ACTUAL

<b>DROPPED CLUBS: 4</b>	<b>53 CLUBS OF 150 ADDED 1 OR MORE NEW MEMBERS</b>	<b>GENDER DISTRIBUTION</b>
<b>DROPPED MEMBERS</b>	<a href="#">CLICK HERE FOR CUMULATIVE MEMBERSHIP DATA</a>	MALE 2,386 (65.03%)
DECEASED 32		FEMALE 1,272 (34.67%)
CLUB CANCELLED 6		NON BINARY 0 (0.00%)
OTHER 145		PREFER NOT TO ANSWER 11 (0.30%)
<b>TOTAL 183</b>		<b>TOTAL FAMILY UNIT MEMBERS 755</b>
		<b>FAMILY MEMBERS PAYING HALF DUES 390</b>